

TAHOE HERITAGE FOUNDATION



...preserving a window to the past

Volume 10, No. 1

Fall 2007

Tahoe Heritage Foundation has another partner...

THF JOINS WITH THE CITY OF SOUTH LAKE TAHOE TO SUPPORT THE NEW EXPLORE TAHOE CENTER

Partnerships abound in conjunction with the new Explore Tahoe project. The Tahoe Conservancy conceived of the idea of taking the transit center and re-developing it into “something wonderful”... a place where locals and visitors alike learn how to experience Lake Tahoe in a way that enables maximum experience with minimum intrusion into the nature of the region...an urban trailhead. As the transit center is in the City of South Lake Tahoe, the first partner was the City itself. Since the center is at the base of the new Heavenly gondola, and Heavenly understands well the inter-relationship of the visitor and the mountains, Heavenly was a natural partner. And then of course, who is better able to explain the natural environment at Lake Tahoe than the United States Forest Service? A plan was hatched to have the Tahoe Conservancy oversee the development of the project, the City of South Lake Tahoe to operate the facility once completed, and both the United States Forest Service and Heavenly Valley Ski Corporation to provide staffing for the center.

Well then, how did Tahoe Heritage Foundation become involved? THF works with the Tahoe Conservancy on another project, planning for the restoration of the Fredericks Cabin at Fallen Leaf Lake for use by the Tahoe/Baikal Institute and other environmental education groups. Deb Vreeland is the project manager for the Tahoe Heritage Foundation on that project. Deb Vreeland is also the Project Manager for Explore Tahoe: An Urban Trailhead. As plans for the Center developed, the group needed advice on a retail area for the Center. Deb was aware, through her activity with Tahoe Heritage Foundation on the Fredericks Cabin project, of the interpretive-type retail operations run by the Tahoe Heritage Foundation at the Taylor Creek Visitor Center and the Baldwin Museum at the Tallac Historic Site. Deb knew that this attention to interpretation in its retail operation was exactly what the shop at Explore Tahoe needed. She suggested to the City of South Lake Tahoe that THF would be the perfect partner to operate the retail operation at Explore Tahoe.

A partnership was born!

This holiday season stop by the Explore Tahoe interpretive store and discover for yourself the wonder and beauty of the timeless snowflake. The store will offer snowflake ornaments, snowflake cookie cutters, snowflake prints, snowflake stickers, books about snowflake photography, and other snowflake-themed items that come from a variety of artists nationwide. Did you know that no two snowflakes are alike?

On December 22nd, Explore Tahoe will be hosting Snowflake Fest 2007, an all day snowflake extravaganza for the whole family. Learn about Snowflake Bentley, try our homemade apple cider, or gather outside to celebrate the winter solstice as we ring in the winter season.

Come back in January and ask us about our winter programming; we look forward to seeing you!



Thoughts on the new Explore Tahoe Center... BY TIMOTHY RAINS

Minutes before opening “Explore Tahoe: An Urban Trailhead,” I stood still. My uniform, freshly delivered only moments before, was on, my name tag shiny, my brown suede shoes new, and my hair (what is left of it) recently buzzed. The rush of the day swirled about me. I could hear the excited chatter of my boss Gary Moore as he expounded upon the uniqueness of the center. I watched as Deb Vreeland, the project manager, spot cleaned the glass counter in random dabs. Jane Mitchell from the Tahoe Heritage Foundation moved around Deb straightening and adding items to the store. I closed my eyes to the rush and . . .

Saw myself young and green three years ago arriving in the basin for the first time, new to the Forest Service, new to Visitor Centers, non-profits and the often asked question: “What is there to do in Tahoe?” My breath was taken away by the stark and graceful beauty of the mountain ranges that surrounded me, the simple delight of discovering a field of shooting stars right across the street from where I lived, and the frustration of having to awake at a very early hour in order to take the garbage out so the bears wouldn’t get into it. I also saw the transit center as it was three years ago, an empty room with white walls, restrooms and a clock. I remember “Smokey” explaining to me how the keys worked and who to call in case of an emergency.

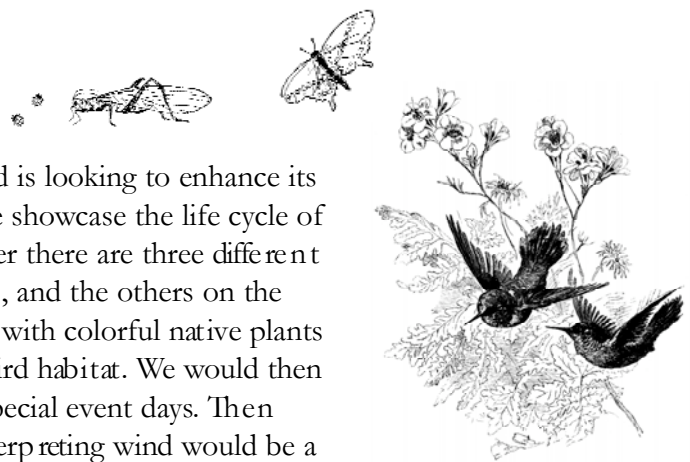
As time passed, I lost thirty pounds, shaved my head, grew a beard and found myself laminating pictures for a trolley exhibit on the wall at the transit center—also helping to put up on the wall an exhaustive compilation of local maps and ideas for where to go hiking. Eventually I would coordinate a Tahoe Rim Trail exhibit in the backroom and a discovery tracks trail with my boss Gay Eitel and another coworker. Everything involved a ton of staples, rolls of tape, and an increasing amount of patience. At the heart of all these temporary changes, the center remained the same—white walls, a bathroom, and a clock.

I remember meeting Deb Vreeland, Dana Dapolito, and Kathay Lovell for the first time as they talked about dogs and horses in the Emerald Bay room of the Forest Service supervisor’s office as the final phase of the Explore Tahoe project was underway. That winter and the following spring/summer: snow fell lightly, the steering committee argued over the meaning of the word “Pure”—together we would inspire artists and visionaries, battle deadlines, dust, and fires all in the name of our vision of Explore Tahoe. Well . . .

The walls are no longer white, the clock is gone, and I can definitely answer the question of “What is there to do in Tahoe?” As we look to the future of the center, we plan enhancements of the children’s area with educational toys, live exhibits, and a reading library; and we plan two new exhibits in the main area, one on wildlife and one on orientation in the basin. The mission of Explore Tahoe is to encourage, inspire, and educate visitors and residents of Lake Tahoe to help preserve this fragile resource and in doing so create a sustainable balance for generations to come. There are many ways to help and guide this vision. Together we have and will continue to make a difference. Thanks for helping to shape this vision we share.

BUTTERFLIES, HUMMINGBIRDS, WIND...

In the coming year Explore Tahoe: An Urban Trailhead is looking to enhance its visitor entrance area. Currently in the children’s area we showcase the life cycle of the caterpillar/butterfly. Near the entrance to the center there are three different garden plots, one next to the water fall at Cecil’s Market, and the others on the respective sides of the patio. Imagine those areas filled with colorful native plants and wildflowers that make up butterfly and hummingbird habitat. We would then be able to release our butterflies into our gardens on special event days. Then imagine wind sculptures and hummingbird feeders. Interpreting wind would be a unique addition, as it has both visual and sound components; it appeals to more than one sense and combines well with the existing water component. This area will become the place in the village where families gather for lunch, to take in elements of native wildlife and to get excited as a preview to visiting some of the other natural sites around the basin, such as the Taylor Creek Visitor Center and the new gardens at the Tallac Historic Site. Please consider donating to this butterfly/hummingbird habitat project



Notes From Taylor Creek... BY M. ST. MICHEL

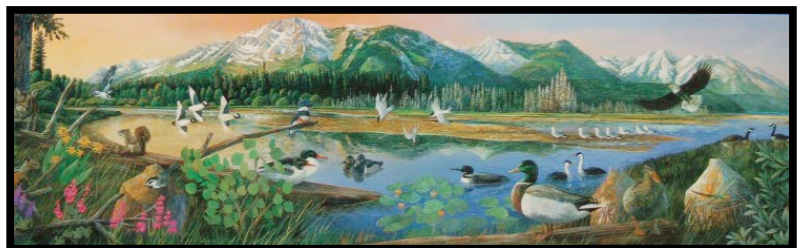
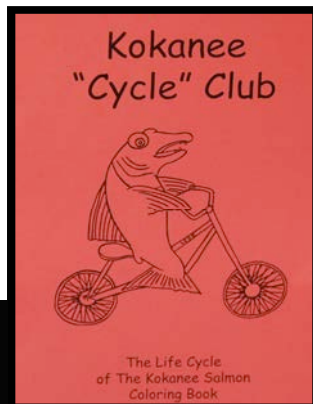
COOL NEW ITEMS FOR 2007

The Taylor Creek Visitor Center and the Tahoe Heritage Foundation significantly added to their collection of specific sales items related to the Taylor Creek area this year. Over the years we have added items that are specific to the site, like the Larry Eifert poster and 500 piece puzzle and books specific to the Tahoe and Taylor Creek area. But the 2007 season was exceptional for the amount of new items for one year! Continuing with the Larry Eifert line we added a 50 piece children's puzzle of the Taylor Creek watershed. It is the same design as the 500 piece boxed puzzle but for a younger audience. This is very typical of Eifert's products sold in other centers around the country. We also added a bookmark and magnet (same design) that have been selling well at the Visitor Center. We have been selling hands-on photo cubes that can be manipulated into different shapes making different photos at the Visitor Center for several years. This year we designed our own Taylor Creek photo cube with six original photos of our area including a photo of the Visitor Center, spawning Kokanee salmon, several wildflowers, an interior photo of the Stream Profile Chamber and some wildlife. These cubes are lots of fun and sell well.

Probably the most exciting new item for this year, is the new Kokanee Salmon Brochure! For years we had been handing out copies of an old Forest Service publication on the Kokanee, then California Fish and Game gave us a publication on Kokanee, which was generic and not specific to the Kokanee Salmon of Lake Tahoe. So, during the fall of 2006, with the help of an intern funded by the Tahoe Heritage Foundation, we started work on a new color brochure that would be specific to the Kokanee at Lake Tahoe. As the intern worked on the text, the staff was out getting the best possible pictures of the salmon in Taylor Creek at their different stages. Over the winter the staff reviewed and reviewed the layout for any errors and to make sure the information was correct. We then got additional funding for the printing of the brochure from Tahoe Wildlife Care and California Inland Fisheries Foundation, Inc with the majority of the printing costs coming from Tahoe Heritage Foundation. Larry and Nancy Eifert reviewed the brochure and made all the arrangements for the printing of the brochure. We printed 15,000 and should have plenty for years to come. At the writing of this article (Oct. 16, 2006) we have already given out over 3,000 brochures during this year's Kokanee salmon run!

The Tahoe Heritage Foundation also covered the costs of the printing of the 2007 edition of the Lake of the Sky Journal. The Journal is the Forest Service's summer Recreation publication that gets very wide distribution and plays a key role in helping visitors plan their time while at Lake Tahoe. It is distributed at the Tallac Historic Site, the Taylor Creek Visitor Center, at Chamber of Commerce offices around the lake, State Parks, campgrounds, hotels and many other places where visitors are found.

The coloring book and brochure to the right are free to visitors; the cubes below, from Tim Rains photos, and items made from the Larry Eifert art, lower right, are sold at the Taylor Creek Visitor Center shop.



Garden Report Summer 2007...BY BARBARA CRAVEN

We had an exciting summer in the gardens at the Tallac Historic Site (Baldwin and Pope Estates). The Baldwin gardens were maintained by the Grape and Garden Club and the South Lake Tahoe Garden Club. We are continuing to do planting on the final section of this area as donations come in.

The big push this summer was to redo the Pope Estate Arboretum using historical records and photos. First, a new sprinkler system was installed. Next the old lawn area was leveled. New soil was put in and topped with 9,000 square feet of special sod. Now it looks like a park with the lawn and vista to Lake Tahoe. The Probsts built boundary fences around the area, to be finished in 2008. The work of laying turf was done by John Fellows of Aspen Hollow Nursery who donated a great deal of the labor and materials.

In the lawn is a beautiful Norman Spruce. John Long has designed a circular bench around the tree. This will be built in the same style as the gazebo using funds donated by family and friends of Lucy Fosholt Deyerberg. These donations also made possible some of the plantings in the arboretum this summer.

Thanks also to the R.V. volunteers Judy Shilling, Christina Williamson and Linda Ramsy for all of your work to make this area such a joy to so many people.



Careful Prep Work



Laying the Sod



John Fellows, of Aspen Hollow Nursery walks across the new lawn at the Pope Arboretum.



New Paths

New Web Site...BY JANE MITCHELL

This past spring we brought our web site design “in-house” with the hope of being more responsive to our supporters and partners. We have added blogs to the Visitor Center section with daily updates during the Winter Treks season. We will shortly have an Explore Tahoe section with blogs for its interpretive program attendees. We have enhanced our Projects section that showcases our restoration efforts, and are considering a Retail section where we can display the interpretive items available in our retail shops. Please check us out at www.tahoheritage.org. And send your suggestions to jane@mitchellfamily.com.

Pope Estate Experiences Major Change this Summer! BY ALLIE WENZL

The Pope Estate, located in the heart of the Tallac Site, received a major “facelift” this year with the majority of the work focused in the arboretum area. The Pope Arboretum has been looking somewhat “unkempt” over the past couple of years and after careful research the USDA Forest Service and the Tahoe Heritage Foundation decided to do something about it. By looking through historic photos of the area, we found evidence of a lush, green lawn that surrounded not only the arboretum but the entire front portion of the house. Over the course of a month, Aspen Hollow Nursery worked long days in order to prep the landscape and install the irrigation system and sod.

In 1899, the Lloyd Tevis family purchased what is now the Pope House from George Tallant. The Tevis Family wanted a larger estate; so in addition to altering the house significantly, in 1903 the family installed a very idyllic arboretum, which boasted non-native plants, trees, a large sprawling lawn, and a large fish pond. It is said that the Tevis and Pope families needed twelve gardeners during the summer to take care of the lush gardens on the Estate.

The restoration of the arboretum has been a long time goal for the staff at the Tallac Site. The USDA Forest Service and Tahoe Heritage Foundation have focused much of their energy on the preservation of the historic structures. Now, with many of the structures in good shape, the focus can shift to the restoration of the grounds. Over the past several years, the Baldwin Estate gardens have come to life with the help of numerous garden volunteers from the Grape and Garden Club and South Lake Tahoe Garden Club. It is partnerships such as these that help keep our grounds maintained by very knowledgeable gardeners who continually offer helpful suggestions and advice. The restoration of the arboretum area will continue for several years, but for right now we have a great start, in part thanks to the hard work and efforts of Aspen Hollow Nursery and many volunteers..

Year-End is Approaching...

In the past, Tahoe Heritage Foundation has spent the winter reflecting on its accomplishments and planning for the future. We are doing that again this year. We see progress on the plans for the Fredericks Cabin restoration; we enjoy the many new and custom products at the Visitor Center; we hear glowing reports of the beginnings of the Children and Families exhibit and related new merchandise at the Baldwin Museum; we are delighted with the completion of the Baldwin roof and the Arboretum lawns; we take pride in the opening of the new shop at Explore Tahoe. We are studying the audio/visual shed at Yosemite and making plans for a similar one at the Taylor Creek Visitor Center. And as always, we are asking for your help for next year’s projects: the new audio/visual shed for the Taylor Creek Amphitheater, more plantings around the Pope gazebo, and the new butterfly/hummingbird garden at Explore Tahoe.

But this year we find ourselves in a winter frenzy. For the first time we will be operating a retail operation during the winter season. Snowflakes, snowshoeing, winter animals and the like are now spinning in our heads. We will have the first original in what we plan to be a series of custom ornaments; the subject this year is our wonderful Mount Tallac (to right). Please come by the Explore Tahoe Center, get started on your holiday shopping, and let us know what you would like to see in the future. This is new ground for us.



And of course, please fill out and return the enclosed donation card to get us started on next summer.

Letter from the President

2007 has been a productive and rewarding year for the Foundation. We have broadened our horizons and have taken on some additional projects and responsibility, both of which are exciting and important for the Foundation's future. Some of these are explained in more detail in this newsletter.

The Explore Tahoe project, which is in partnership with the City of South Lake Tahoe and assisted by the U. S. Forest Service as well as Heavenly Valley Resort, is sure to become a great asset to the community. The Foundation is pleased to be able to establish a presence at the site, both to better educate the public about the Foundation and its mission, and to raise funds in support.

We have continued to work in partnership with the California Tahoe Conservancy and the Lake Baikal Institute on the Fredericks Cabin project. When completed, the facility will be a wonderful addition to available public resources and, perhaps, the Foundation will have the opportunity to utilize it in some way. We look forward to working with the California Tahoe Conservancy on other and similar projects in the future.

As most of you probably realize, our partnership with and assistance to the USFS is increasingly important, as this important federal agency experiences continuing budget reductions and loss of staff. The opportunity for the Foundation to contribute increases annually, and the importance of our contributions and involvement similarly increases.

Accordingly, we hope that all of our supporters will not only continue their generous donation of time and resources, but also consider what increase may be possible. The needs that the Foundation seeks to fill will not diminish; our mission and the specific projects we support will continue.

The Foundation is lucky to have a very dedicated and hard-working Board of Directors. As reported last year, we have been able to eliminate a staff position because of the contributions of the individual directors, and to utilize valuable resources for projects instead of salary. Our Business Manager, Joyce Harris, is always ready to step up and keep us all working smoothly. This year, I would like to particularly acknowledge and thank Jane Mitchell for her varied significant contributions to the Foundation, and particularly in relation to the Explore Tahoe project. Additionally, we want to acknowledge the significant contributions and dedication of our Treasurer Harold Singer, and we extend our sympathy to him and his family at the loss of their house and possessions in the Angora fire. We all have been touched by that tragedy, and Harold is one of the many community contributors who unfairly lost so much in that disaster.

We are looking forward to 2008, and to your continued support and encouragement. We solicit your comments and views on how we are doing. We are always open to suggestions for projects and, of course, for your generous donations of time and resources. We are thankful that so many of you continue to share the view of the importance of the Tahoe Heritage Foundation.



President

Look for us on our web site: www.tahoheritage.org which will be updated early next year.

Tahoe Heritage Foundation • P.O. Box 8586, South Lake Tahoe CA 96158 • voice 530.544.7383 • fax 530.544.7778
www.tahoheritage.org e-mail: thf@sbcglobal.net